



## **'DOR'Online Manual**

### **Thank you for purchasing this product**

Thank you for purchasing 'DOR'! In this manual, you will find useful information, such as how to boot up and play as well as user support material. Please read this manual thoroughly and enjoy the game!

#### **CONTENTS**

##### **About 'DOR'**

Game Contents

##### **System Requirements**

System Requirements

Teaser Menu

HDD Installation

Miscellaneous

##### **How to Play**

How to Play

Opening Menu

Pop-up Menu

Properties

##### **Customer Care**

About Customer Care

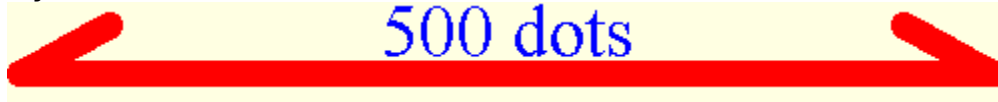
Trouble Shooting

About Copyrights and Warranty

##### **Homepage Introduction**

## Homepage Introduction

\*This help manual is created for a screen wider than 500 dots. Please widen your screen and read this manual. Recommendation: Wider than 800 dots.



## **About 'DOR'**

[Game Contents](#)

## **Game Contents**

*There is a door in front of you.*

*A strange door, which has been created by the Devil...*

### **Game Contents**

'DOR' is an omnibus story. You will be asked to choose from several commands to explore each story. But don't worry, the Devil will lead you to the worlds awaiting you on the other side of the door...

### **Stories**

#### [Kanako's Depression](#)

You're broke and don't have a girlfriend... A girl suddenly visits you while you're taking a nap. Her name is Kanako. She is shy and timid, but her secret is unbelievable...

#### [The Telephone Scandal](#)

You want to have a girlfriend. You call a dating service and guess what! You get a girl and go out for a date. Wait a minute...Is this girl...?

#### [Armored Fighter Gyleban](#)

The evil organization of Gill Grauber tries to dominate the world. One man stands against their nightmarish plans and challenges them. His name is Ryosei Motosu, a selfish bastard... People call him the Armored Fighter Gyleban! (or the selfish bastard.)

# **System Requirements**

[System Requirements](#)

[Teaser Menu](#)

[HDD Installation](#)

[Miscellaneous](#)

## System Requirements

You need the following system configuration in order to play 'DOR'. Please make sure that your computer meets these requirements (these are the minimum requirements).

### Microsoft Windows XP/Me/98/2000

<b>CPU</b>	Pentium/133MHz (Pentium/166MHz or higher recommended)
<b>Memory</b>	32MB (64MB or higher recommended)
<b>Graphics</b>	HighColor or more (24bitTrueColor/AGP BUS connected Graphicboard recommended)
<b>Sound</b>	OS matched MIDI sound (GS sound recommended) and/or DirectSound are recommended
<b>CD-ROM</b>	8x(12x or higher recommended)
<b>Etc.</b>	OS matched pointing device (i.e. Mouse)

- \*The above specifications are the default settings for Microsoft Windows 98. Results may vary depending on the OS version and the graphicboard's abilities.
- \*Microsoft Windows XP/Me/98/2000 and DirectSound system are recommended for best results.
- \*Depending on the graphicboard abilities, this application may require more system configuration than described above.

## Teaser Menu

### Starting The Teaser Menu

'DOR' corresponds to Windows autoplay function. The teaser menu will appear when you insert the CD-ROM in your computer.

1. Turn on your computer and start up Windows.
2. Once Windows has stabilized, insert the 'DOR' CD-ROM into a drive.
3. If the autoplay functions properly, you will see the teaser menu. You can adjust the gameplay settings.



**Execute** Start playing 'DOR'. If you have not installed the game, the installer will appear.

**Quit** Finish playing 'DOR'.

**Re-install** You can re-install 'DOR'. Look for this command inside of "Set Up" menu.

**Un-install** You can find this command inside of "Set Up" menu.

\*If you choose "Start" in the teaser menu after installing the game, 'DOR' will start.

\*You need to keep the 'DOR' CD-ROM inserted during the game.

**In case the teaser menu does not show up**

1. Click the right mouse button on the CD-ROM icon and choose "Autoplay" from the menu.
2. If you can't find the "Autoplay" command, choose "Open" command and run "DORUST.EXE."



# HDD Installation

## HDD Installation

Choose this command to install the game data on to the hard disk. Choose "Start" command in the teaser menu to start the installation, then follow the instructions to complete installation.

\*If you use a compression drive, this game may require more open space than it states. Loading time from the compression disc may take longer than usual disks.

## Un-installation

After a successful installation, you will see the "Un-install" command in the teaser menu. Choose this command when you need to un-install the game.

## Miscellaneous

### About DirectX

'DOR' uses DirectSound. If your computer does not have MicrosoftDirectX7, please install it before you play the game. When you re-install manually, choose "Install" in the teaser menu and install DirectX or execute "Dxsetup.exe" in the CD-ROM and open the DirectX installer.

### Auto play

Auto play (or Auto run) is one of the functions of Windows. 'DOR' is playable with this function on or off.

- \*Please refer to the Windows manual regarding the auto play function.
- \*With the auto play function activated, the computer will run the program automatically as soon as the CD-ROM is inserted.

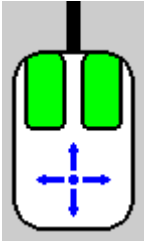
# How to Play

How to Play  
Opening Menu  
Pop-up Menu  
Properties

## How to Play

### How to Play The Game

You will be required to use a pointing device (i.e. Mouse) to play 'DOR'. The following instructions are based on a mouse device, but the basic controls are impartial to other devices.



Like the arrows indicate, you move the mouse to control the cursor. Click/double click the green button to execute or cancel commands.

**Left button** : Execute a command & skip messages

**Right button:** Cancel a command & display a pop-up menu

\*The manual is based on a standard mouse with two buttons without a wheel.

\*Depending on the scene, you may cancel your action by clicking the right button.

## Opening Menu

When you start the game, you will be greeted by the devil and see the opening menu.



- |                        |   |
|------------------------|---|
| <b>Select scenario</b> | Opens the scenario selection menu.            |
| <b>Openings</b>        | You may view the openings of prior DOR games. |
| <b>Finish the Game</b> | The game will end.                            |

\*After clearing the game, 'The Door of Recollection' will be added.

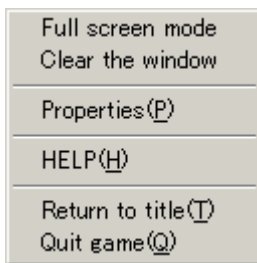
### Scenario Selection

You can choose the scenario you want to play from the following titles:



Kanako's Depression  
The Telephone Scandal  
Armored Fighter Gyleban

## Pop-up Menu



You can call for the pop-up menu by clicking on the right mouse button during gameplay. In this menu, you can change the settings and call for the dialogs.

### **Full screen Mode/Window mode**

You can switch the window size by choosing this command, depending on the resolution of your monitor setting.

### **Clear the window/Show the window**

You can either turn the message window on or off by choosing this command. The gameplay pauses if you choose the off position.

### **Properties**

Shows the system dialog.

### **HELP**

You can come back to this menu.

### **Return to title**

You can jump to the title screen.

### **Quit game**

Finish the game and return to Windows.

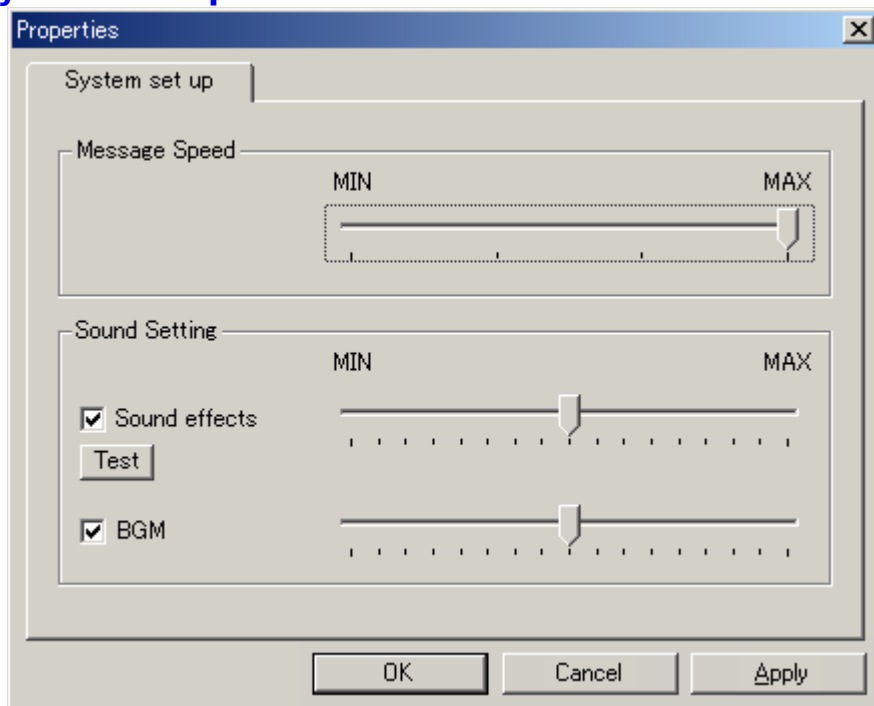
### **Note: Save and Load**

During gameplay, the saving of data will be automatically conducted everytime gameplay is turned off. When returning to 'DOR', the program automatically loads the saved data.

## Properties

You can access the system dialog by choosing the "Properties" command in the pop-up menu. The system dialog lets you change the settings of the game.

### System set up



### Message Speed

You can adjust the message speed. MAX is the fastest.

### Sound Setting

Here, you can adjust the settings for sounds, which include sound effects and background music.

\*Depending on your sound system configuration, you may not be able to access these settings.



# Customer Care

[About Customer Care](#)

[Trouble Shooting](#)

[About Copyrights and Warranty](#)

## About Customer Care

When you have problems, please follow the instructions in Trouble Shooting. If you still experience problems after following the instructions, please contact our customer care section. When you do this, please send the user registration card included in this game package.

\*The CD itself may have defects. Please send us the CD with a memo describing the problems. We will research the cause and exchange the defective CD with a new CD free of charge.

### User Registration

Fill out the user registration card and send it to us. Otherwise, you may not be able to receive our user support.

If you have any opinions about the game, please send them to us. Your opinions are very important to us.

### Questions about The Product

Please send us your questions, included with a stamped, self-addressed envelope. You may also E-Mail us.

### About Hints

If you would like hints about the game, you can contact us by mail or E-Mail. Please send us a description of what hints you would like help with.

#### Address

G-Collections.com  
3540 West Sahara N. E-155  
Las Vegas, NV 89102-5816

#### E-mail

info@G-Collections.com

\*Concerning our homepage, please refer to [G-Collections.com Homepage Introduction](#).

## Trouble Shooting

We continually strive to control the quality of our products. However, if you experience difficulties running a program, please try the following procedures first.

- +Please check the power supply to your computer and devices.**
- +Make sure your systems do not have any problems.**
- +Make sure your system meets the program system requirements.**
- +Is MS Windows running without problems?**
- +Did you follow the instruction manual procedures?**
- +Are your system devices compatible with MS Windows?**
- +Are other applications running without problems?**
- +Did you restart your system and try to run the program again?**

We have confirmed that this product is compatible with MS Windows under normal circumstances. However, this does not include conditions when you change the configuration of your system or when the system is not certified as a licensed product. If you need certain adjustments with your device, please contact the manufacturer of the device for further assistance.

### **When you have sound related trouble...**

This game plays BGM, sounds, and other sound effects by using DirectX. If you have trouble playing these simultaneously, please check your DirectX driver or your sound card driver.

Furthermore, please note that if you are originally unable to play Windows, start up sounds or other sounds, you will not be able to play any sounds for this game.

Please try re-registering the PCM switch driver.

After you try all of the above and still have problems, please contact our [Customer Support](#).

## **About Copyrights and Warranty**

### **About Copyrights**

The copyrights of this product are owned by D.O. and G-Collections.com. This includes the game program, sound data, graphic data, printed matter, and all the accessories attached to this product. It is prohibited to copy all or a part of them.

It is prohibited to show or distribute the whole or part of this product without permission.

It is prohibited to rent this product out.

It is unlawful to sell this product.

If any violation of these articles is found, we may take legal action.

### **About the Warranty**

We do not guarantee this program's normal movement, if your device or OS does not function properly.

Furthermore, we do not guarantee its normal movement if it is affected by other programs. We do not guarantee that this program will not affect other programs.

\*All the names in this help file are general trademarks or registered trademarks of companies.

# Homepage Introduction

Homepage Introduction

## Homepage Introduction



You can check out our latest game information, new illustrations, on-line shopping, and more. We sometimes ask our fans to give us their ideas about our games. Check us out now!

### Homepage URL

<http://www.G-Collections.com/>

You can also check out the actual game producer's Japanese Homepage.  
{<http://www.do-game.co.jp/>}

### Information Mail Address

You can contact us using this e-mail address.

**info@G-Collections.com**

{button Send Mail,EF(`mailto:info@G-Collections.com?subject=About Homepage',`,1)}

### Support Mail Address

Please contact us through this e-mail address concerning customer care.

**info@G-Collections.com**

{button Send Mail,EF(`mailto:info@G-Collections.com?subject=DOR Users Support',`,1)}

